

# GALAXI HS

AUTOMATIC WEIGHT PRICE, LABELLING AND CONTROL SYSTEM



DE

## Automatisches Wiege-, Etikettier- und Preisauszeichnungssystem

- Leistung: bis zu 130 Verpackungen/min
- Bedienung über ein hochwertiges Touchdisplay
- Leicht in bestehenden Linien integrierbar
- Kombierter ergonomischer Arbeitsplatz mit Verpackungsmaschinen
- Hoher Automatisierungsgrad
- Maschinenausführung in Edelstahl/Aluminium
- Etiketten und Barcodes vom Benutzer programmierbar
- Schneller Etiketten- und Thermo-transferbandwechsel
- Minimaler Wartungsaufwand erforderlich

IT

## Sistema automatico di pesa, prezzatura ed etichettatura

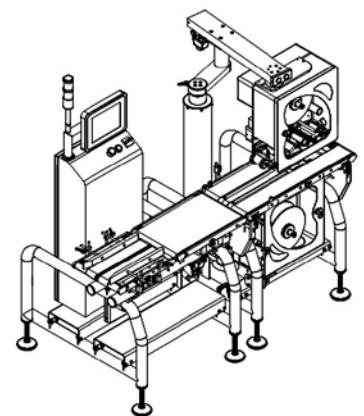
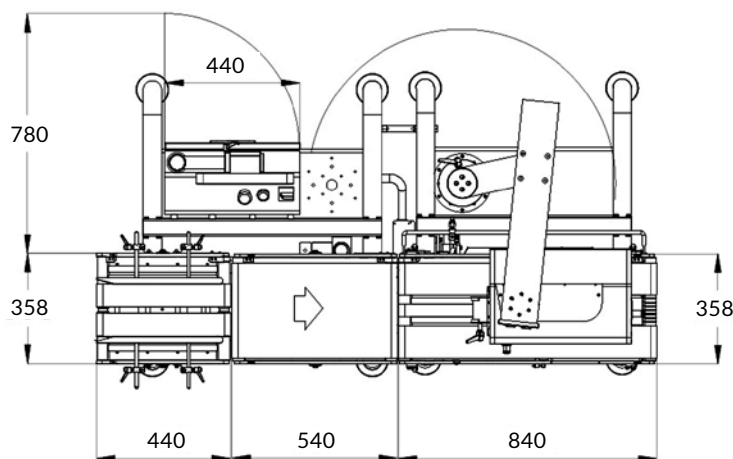
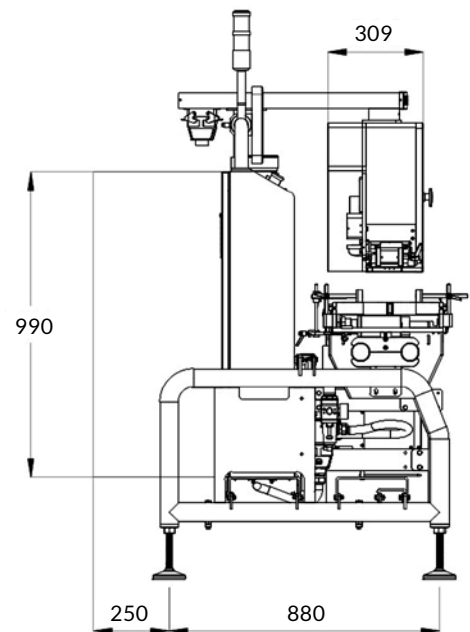
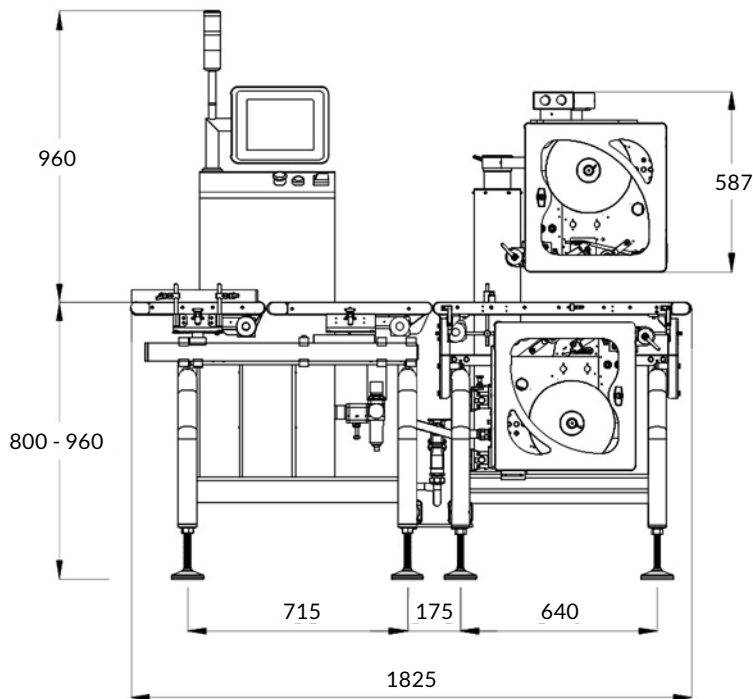
- Resa: fino a 130 confezioni/min
- Funzionamento tramite un display touch di alta qualità
- Facilmente integrabile in linee di produzione
- Postazioni di lavoro ergonomiche combinate con confezionatrici
- Alto grado di automazione
- Macchina in acciaio INOX/alluminio
- Etichette e codici a barre completamente programmabili dall'utente
- Rapida sostituzione dei supporti di stampa e del nastro a trasferimento termico
- Ridotta necessità di manutenzione

EN

## Automatic weighting, pricing and labelling system

- Output: up to 130 packages/min
- Operation with a high-quality touch display
- Easily integrated inline
- Ergonomic work stations combined with packaging machines
- High degree of automation
- Machine made of stainless steel/aluminium
- Labels and barcodes are fully programmable by the user
- Quick replacement of the print media and the thermal transfer ribbon
- Requires minimal maintenance

# TECHNICAL DETAILS



DE

## TECHNISCHE MERKMALE

**Packungsgrößen**  
(L x B x H mm)  
400 x 310 x 250

**Druckgeschwindigkeit**  
Bis zu 300 mm/s

**Wiegebereiche und Aufteilung**  
6kg/1g, 12kg/2g, 15kg/5g

**Druckbereich max. 102mm**  
(Trägerpapier max. 110mm)

IT

## CARATTERISTICHE TECNICHE

**Formato confezione**  
(L x P x A mm)  
400 x 310 x 250

**Velocità di stampa**  
Fino a 300 mm/sec

**Campo di pesatura e divisione**  
6kg/1g, 12kg/2g, 15kg/5g

**Larghezza di stampa max. 102 mm**  
(passaggio carta max. 110mm)

EN

## TECHNICAL FEATURES

**Max. packages dimensions**  
(L x W x H mm)  
400 x 310 x 250

**Printing Speed**  
Up to 300 mm/s

**Weighting range and division**  
6kg/1g, 12kg/2g, 15kg/5g

**Max. printing width 102 mm**  
(max. paper width 110 mm)